



# BRENTWOOD LOCAL PLAN

## Proposed Changes to Submitted Policies Map

September 2021

# Contents

<b>Introduction .....</b>	<b>3</b>
<b>Residential-led site allocation boundary changes .....</b>	<b>4</b>
<b>Green Belt boundary changes relating to Residential-led site allocations.....</b>	<b>5</b>
<b>Green Belt boundary changes relating to Employment site allocations.....</b>	<b>10</b>
<b>Existing Employment Sites .....</b>	<b>11</b>
<b>Green Belt boundary changes relating to Gypsy and Traveller site allocations .....</b>	<b>12</b>
<b>Urban Open Space .....</b>	<b>13</b>
<b>Protected Lanes .....</b>	<b>14</b>
<b>Allotments .....</b>	<b>15</b>
<b>Designated Centres .....</b>	<b>16</b>
<b>Critical Drainage Areas.....</b>	<b>17</b>
<b>RAMS .....</b>	<b>18</b>
<b>Air Quality Management Areas .....</b>	<b>19</b>
<b>Settlement Hierarchy .....</b>	<b>20</b>
<b>Composite Policies Map.....</b>	<b>21</b>

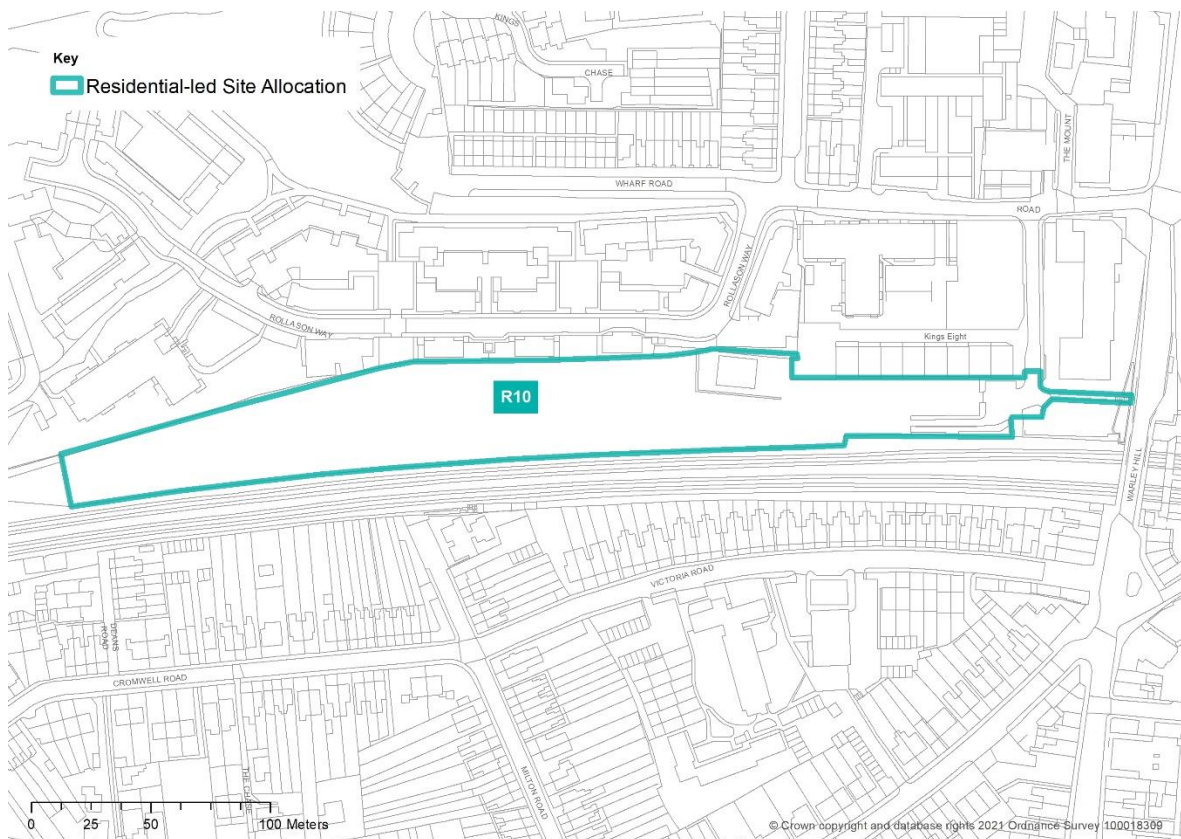
## Introduction

1. This document sets out the proposed changes to the submitted Policies Map that have arisen since the submission of the Brentwood Local Plan in February 2020.
2. An updated Composite Policies Map is included as part of this document. A higher resolution version of the Policies Map is available separately online [www.brentwood.gov.uk/local-plan-examination](http://www.brentwood.gov.uk/local-plan-examination) This is scaled at 1:22,000 at A0 page size, so details of map boundaries can be seen by zooming in.
3. The following designations from the 2005 Policies Map are proposed to be deleted. These were not previously set out in Appendix 4 of the Submitted Plan (Examination document A1) or in the Proposed Changes to Policies Map – February 2020 (Examination document A8). These do not have any corresponding policies or have been superseded and therefore are no longer justified.
  - Grade II agricultural land;
  - Article 4 direction;
  - Indoor recreation;
  - Residential;
  - Major housing site;
  - Hutton mount;
  - Prime shopping frontage
  - Employment-general;
  - Car Parking
  - Crossrail safeguarded area;
  - Railway station;
  - Medical health
  - Hospital
  - Telephone exchange policy;
  - Baytree centre boundary;
  - Cycleway proposals.

# Residential-led site allocation boundary changes

4. The boundary of the residential-led allocation R10 Brentwood Railway Station Car Park set out below is proposed to be amended.
5. In addition, residential-led site allocations R18: Land at Crescent Drive, Shenfield and R20: The Eagle and Child Public House, Shenfield are proposed to be deleted. This reflects MM100 and MM102 respectively of the Schedule of Potential Main Modifications.

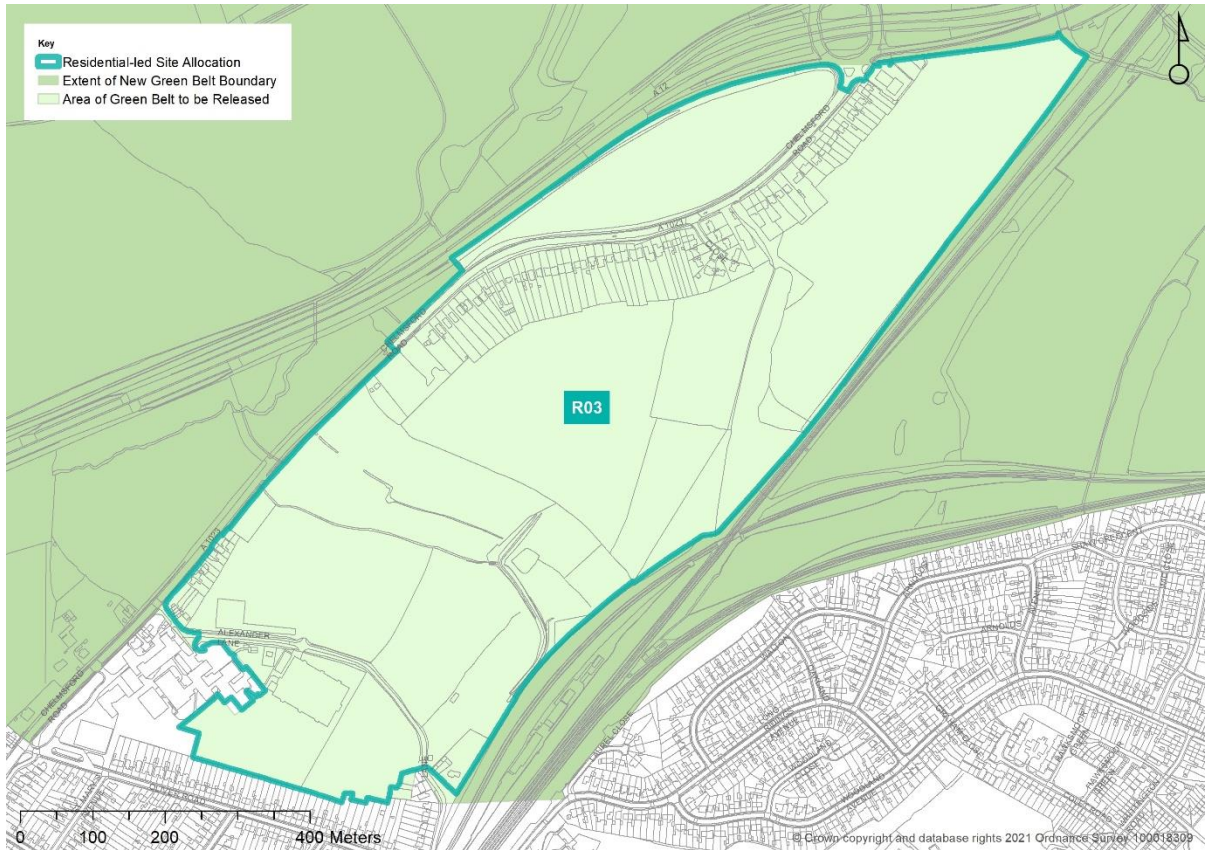
## R10 - BRENTWOOD RAILWAY STATION CAR PARK



# Green Belt boundary changes relating to Residential-led site allocations

- The boundaries of the residential-led allocations set out below remain unchanged but there are proposed changes to the surrounding Green Belt boundaries.

## R03 - LAND NORTH OF SHENFIELD





### R07 - SOW AND GROW NURSERY, ONGAR ROAD



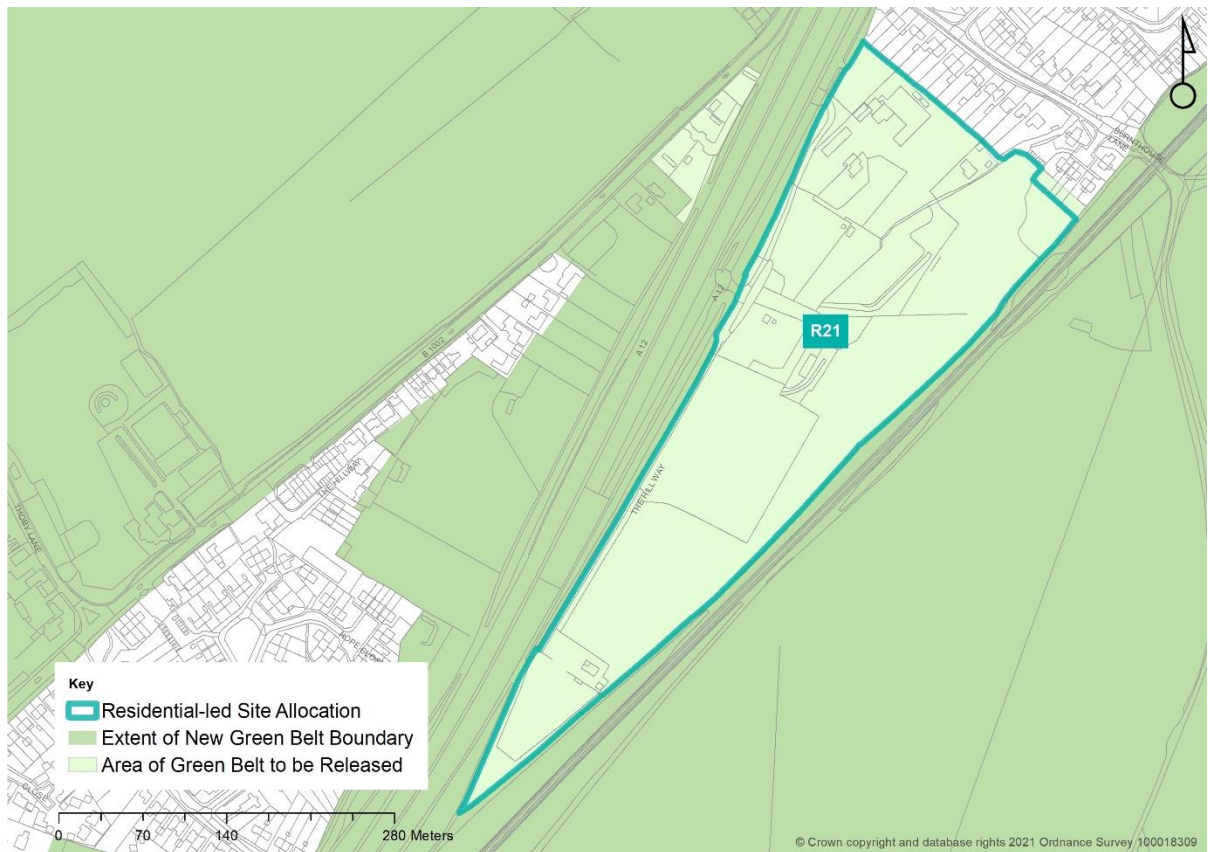
### R09 - LAND WEST OF WARLEY HILL



### R16 - LAND OFF DODDINGHURST ROAD NORTH AND SOUTH



### R21 - SITE ADJACENT TO INGATESTONE GARDEN CENTRE





### R22 - LAND ADJACENT TO INGATESTONE BY-PASS

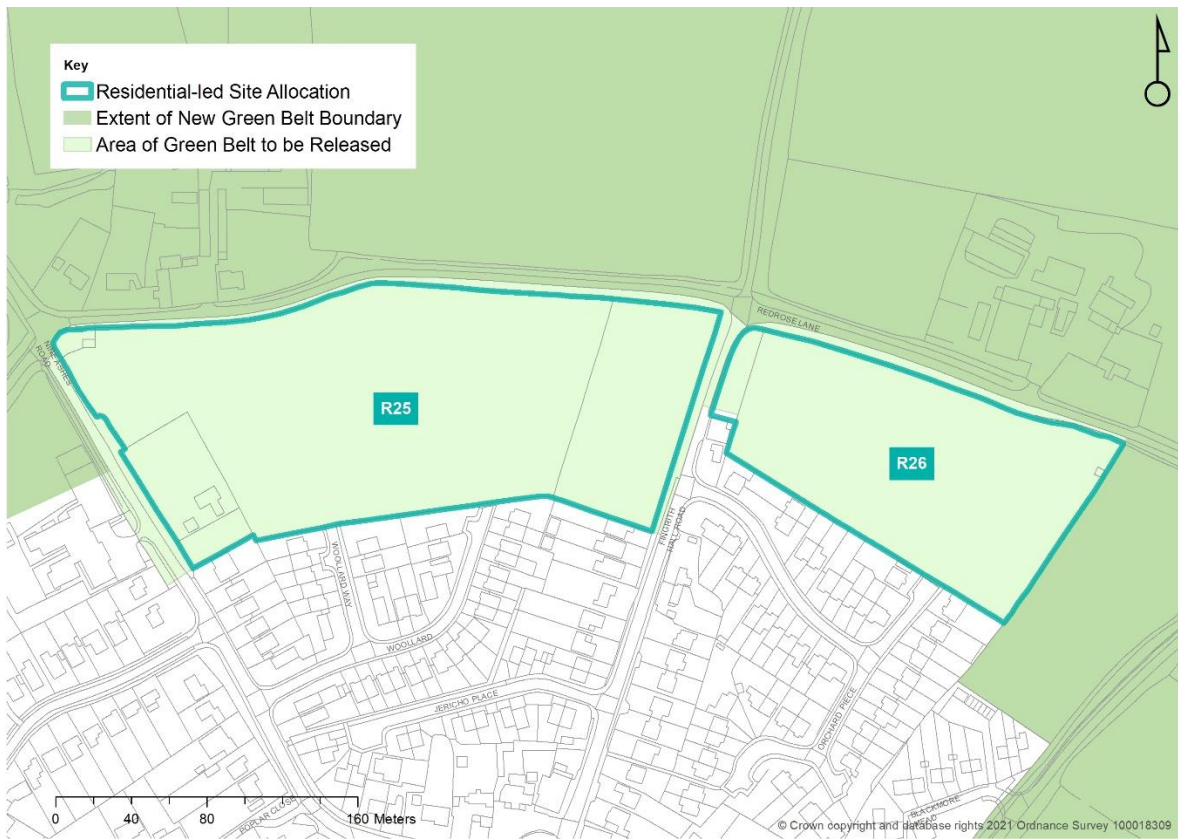


### R24 - LAND OFF STOCKS LANE KELVEDON HATCH





### R25 AND R26 LAND SOUTH OF REDROSE LANE





## Existing Employment Sites

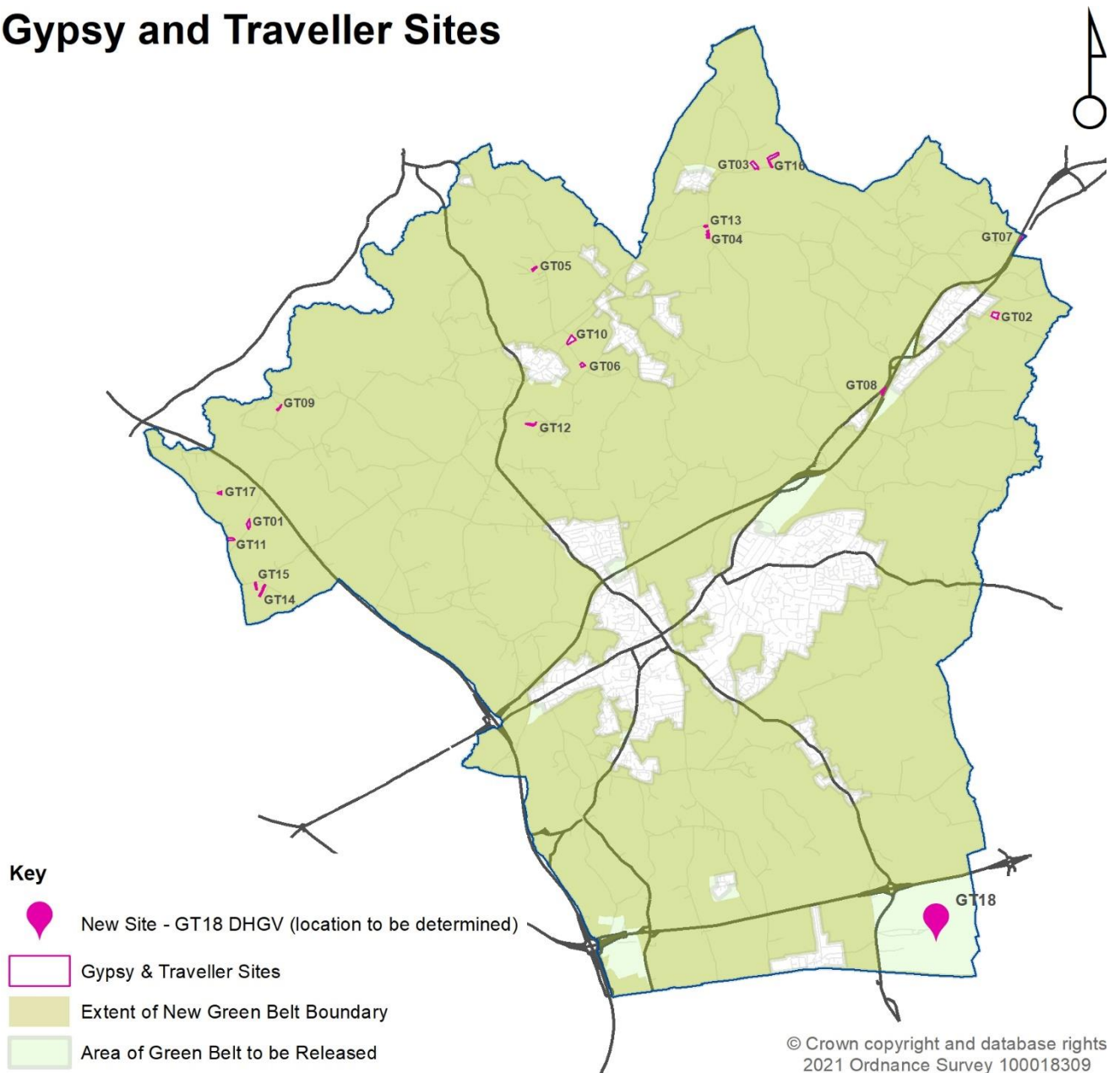
8. The two existing employment sites at Upminster Trading Park and Peri Site, Warley Street are proposed to be added to the Policies Map. This reflects Strategic Policy PC01: Safeguarding Employment Land as set out in MM58 of the Schedule of Potential Main Modifications.



# Green Belt boundary changes relating to Gypsy and Traveller site allocations

9. The Gypsy and Traveller site allocation boundaries remain unchanged; however they are now proposed be removed from the Green Belt on the Policies Map. This reflects Policy HP07: Provision for Gypsies and Travellers, Policy HP08: Safeguarding Permitted Sites and paragraph 6.77 as set out in MM41, MM42 and MM43 respectively of the Schedule of Potential Main Modifications.

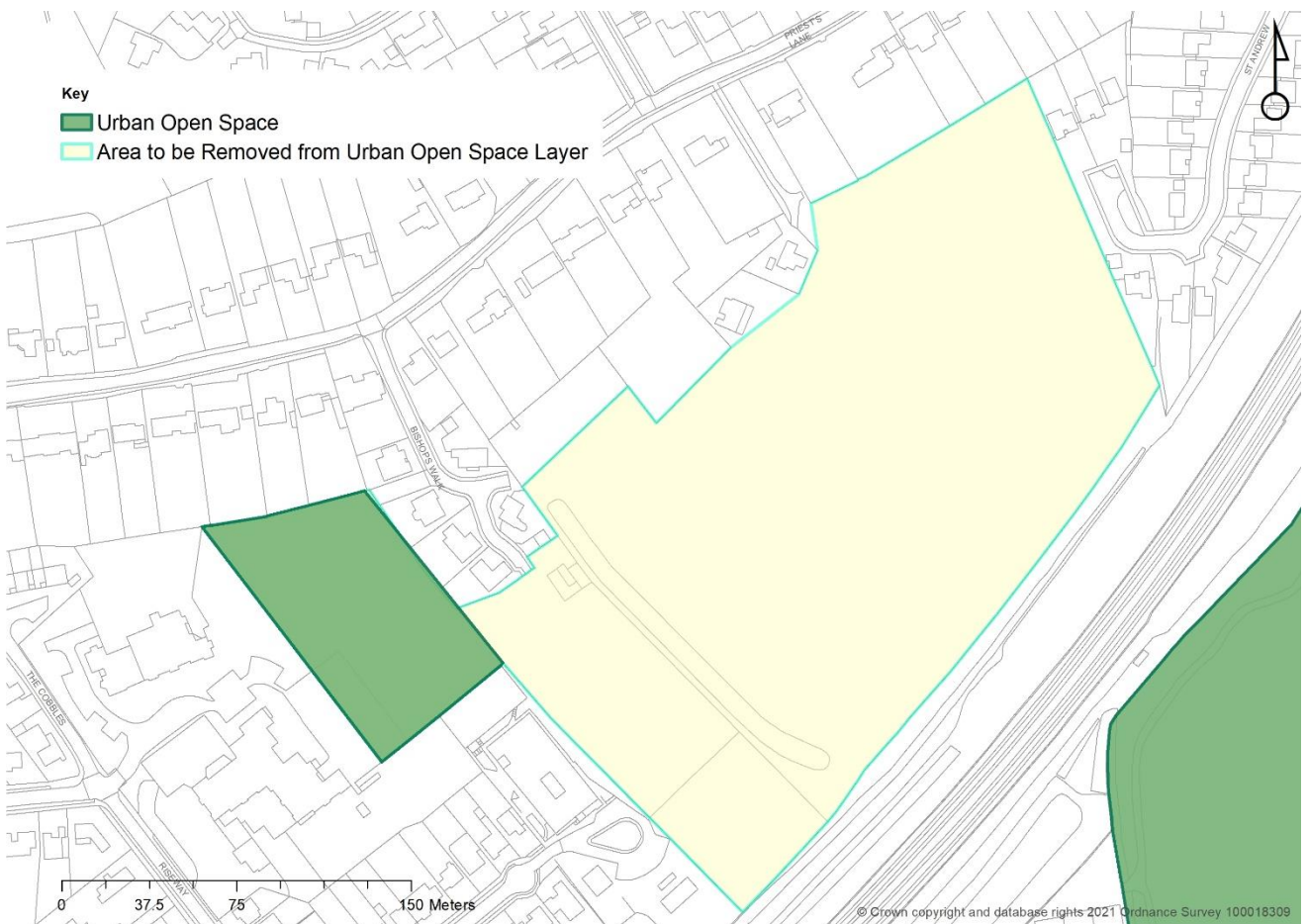
## Gypsy and Traveller Sites





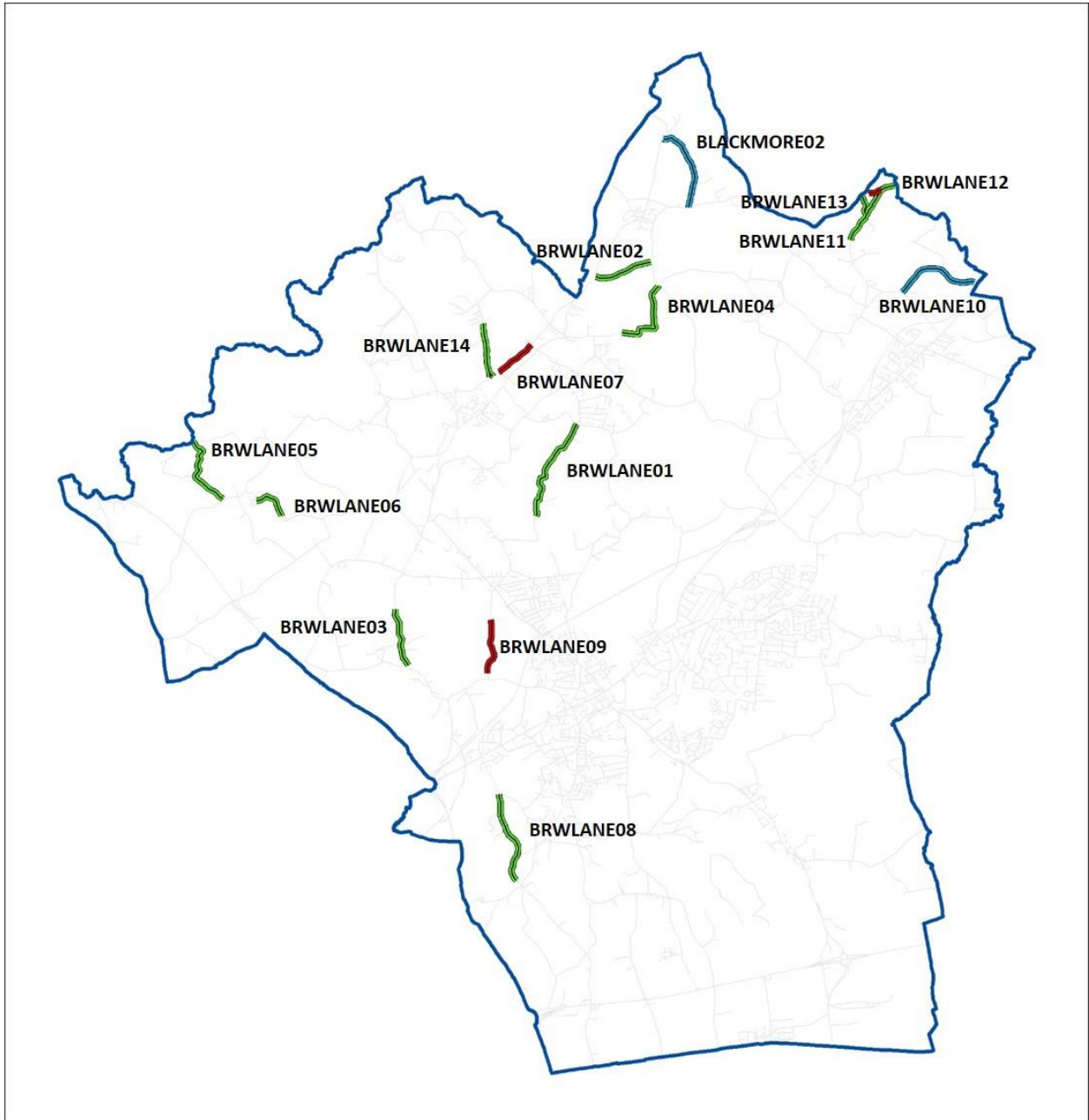
## Urban Open Space

- Urban Open Space (previously identified as Protected Urban Open Space) is proposed to be amended in one location on the Policies Map. The change relates to land at Priests Lane, which has been allocated for residential-led development as per Policy R19 Land at Priests Lane, Shenfield. In addition allotments are now proposed to be shown separately of Urban Open Space. This reflects Policy NE05: Open Space and Recreational Facilities as set out in MM33 of the Schedule of Potential Main Modifications.



# Protected Lanes

11. Protected Lanes are proposed to be amended on the Policies Map as set out below. This reflects Policy BE16: Conservation and Enhancement of Historic Environment as set out in MM51 of the Schedule of Potential Main Modifications.



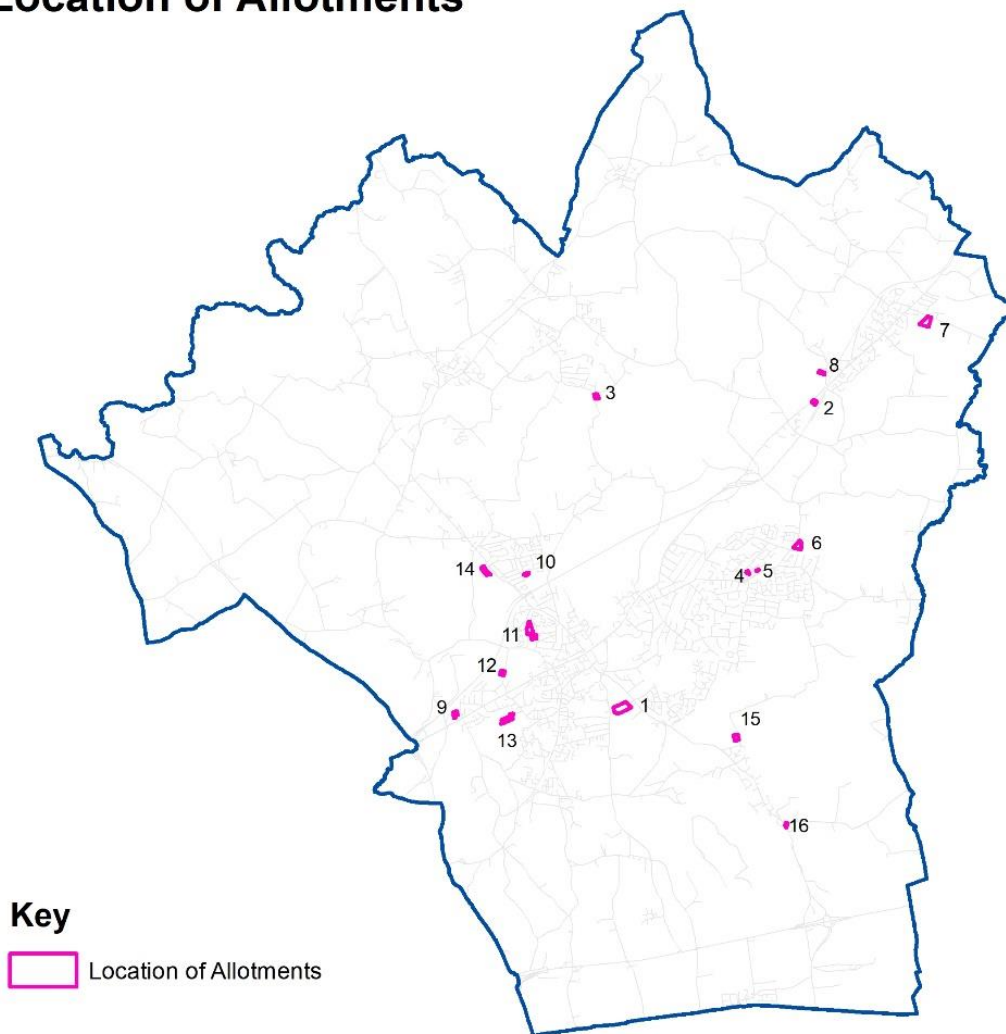
Brentwood Protected Lanes Changes

 Added  Removed  Original Protected Lanes

# Allotments

12. Allotments are proposed to be added to the Policies Map to reflect Policy NE06: Allotments and Community Food Growing Space as set out in MM31 of the Schedule of Potential Main Modifications.

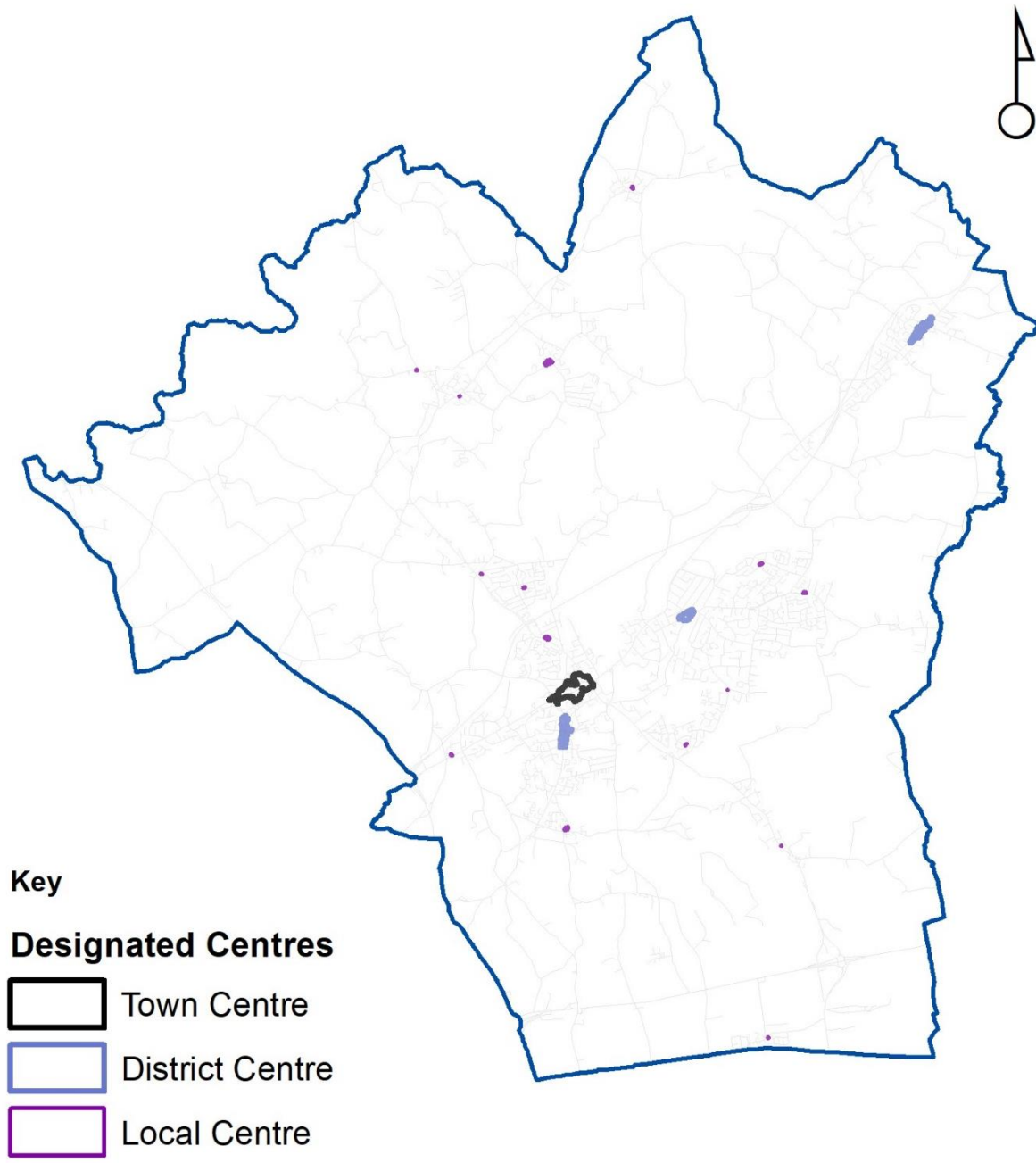
## Location of Allotments



ID	Site_Name	Status
1	Hartswood Allotments	Statutory Allotment
2	Roman Road Allotments	
3	Mountnessing Lane Allotments	
4	Fielding Way Allotments	Statutory Allotment
5	Birkbeck Road allotments	Statutory Allotment
6	Wash Road Allotments	
7	Stock Lane Allotments	
8	Roman Road allotments	
9	River Road Allotments	Statutory Allotment
10	Bishops Hall Road Allotments	Statutory Allotment
11	Park Road Allotments	Statutory Allotment
12	HoneyPot Lane Allotments	Statutory Allotment
13	Crescent Road Allotments	Statutory Allotment
14	Ongar Road Allotments	Statutory Allotment
15	Middle Road allotments	Statutory Allotment
16	Rectory Lane Allotments	

# Designated Centres

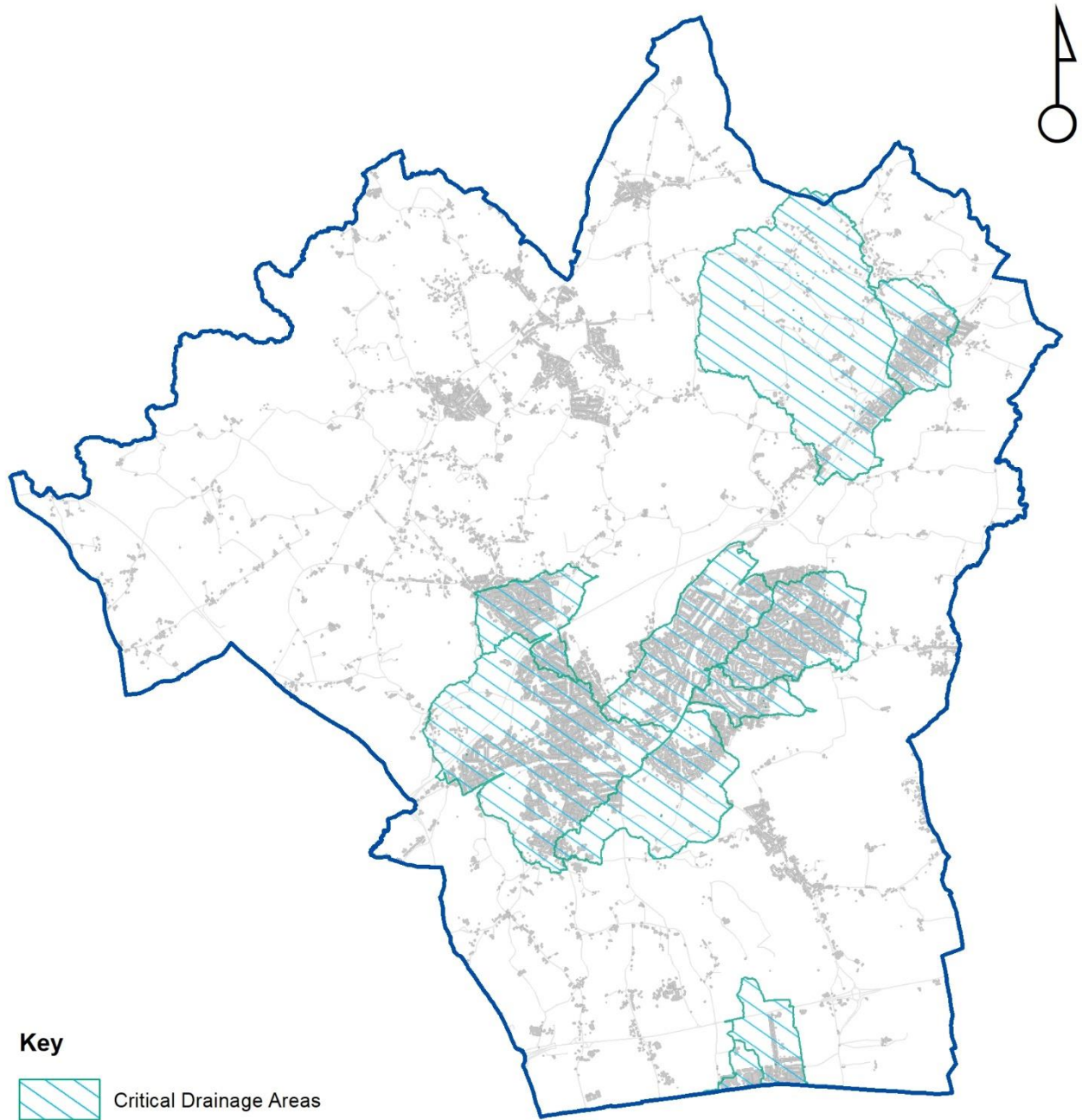
13. Designated centres are propose to be added to the Policies Map to reflect Strategic Policy PC04: Retail Hierarchy of Designated Centres as set out in MM63 of the Schedule of Potential Main Modifications.





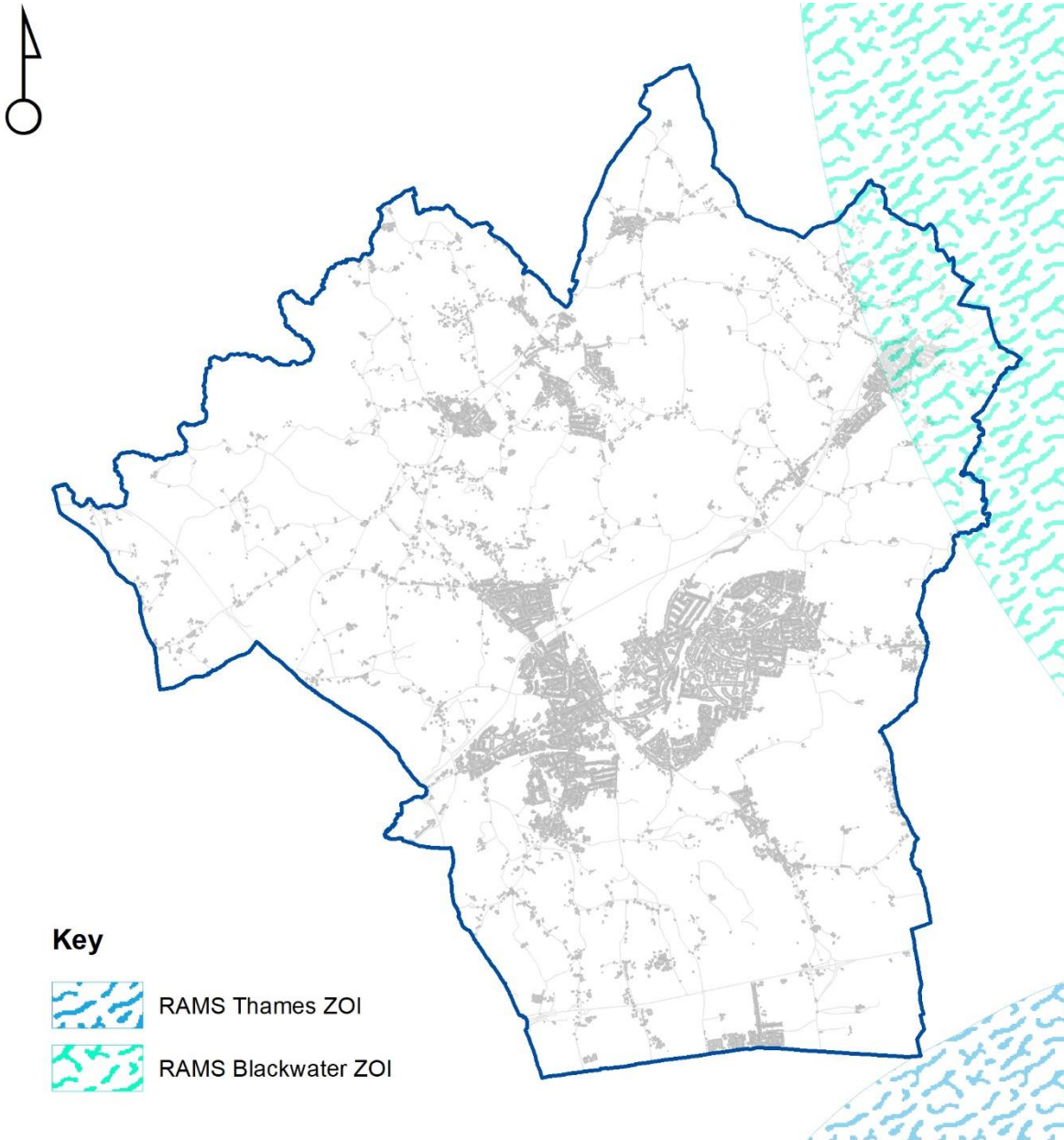
## Critical Drainage Areas

14. The updated Critical Drainage Areas (CDA) are proposed to be included in the Policies Map to reflect Strategic Policy NE09: Flood Risk as set out in MM78 of the Schedule of Potential Main Modifications.



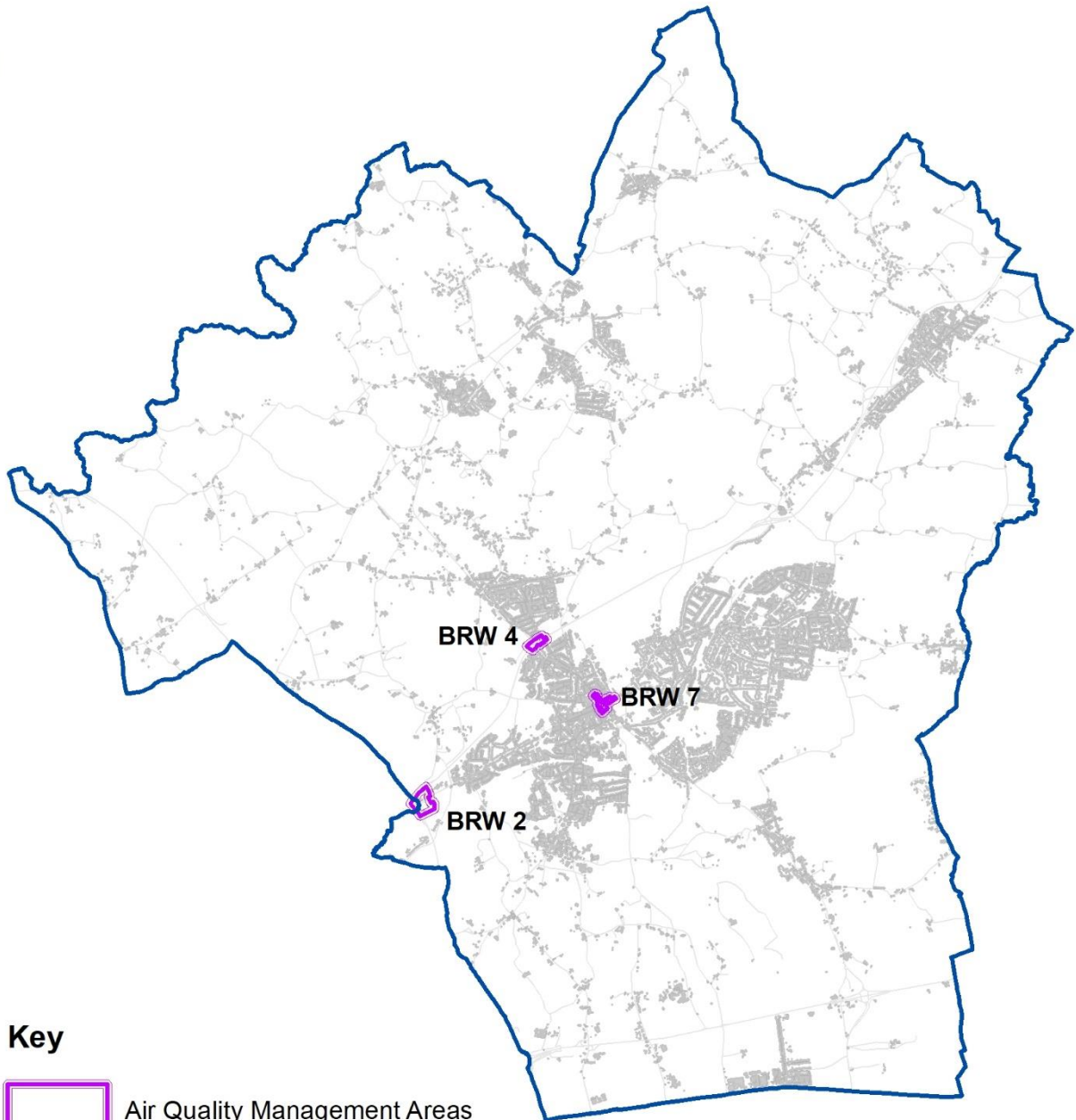
# RAMS

15. The Recreational Avoidance Mitigation Scheme (RAMS) is proposed to be added to the Policies Map to reflect Strategic Policy NE01: Protecting and Enhancing the Natural Environment as set out in MM74 of the Schedule of Potential Main Modifications.



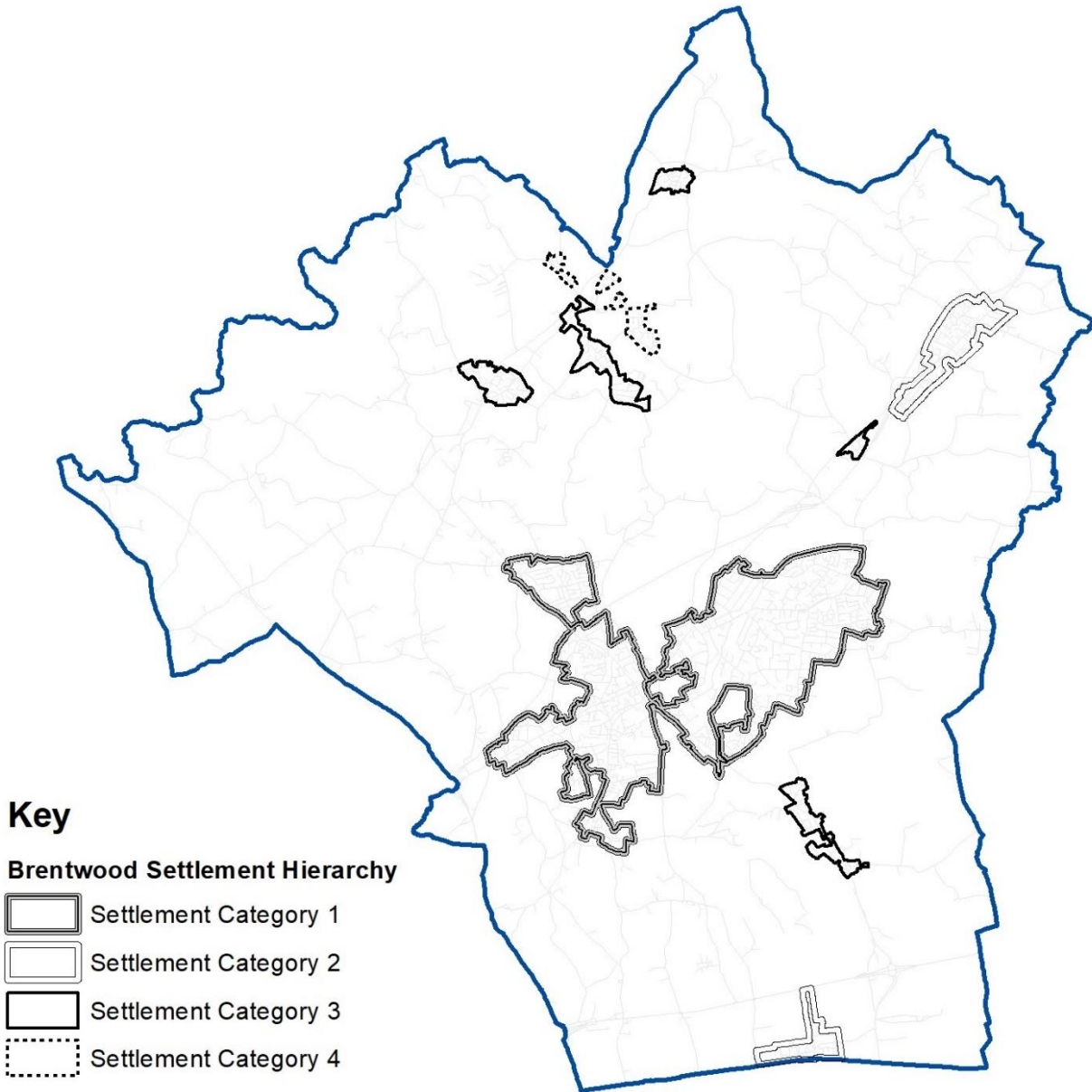
## Air Quality Management Areas

16. Air Quality Management Areas (AQMAs) are proposed to be added to the Policies Map to reflect Policy NE08: Air Quality as set out in MM77 of the Schedule of Potential Main Modifications.



# Settlement Hierarchy

17. The settlement hierarchy is proposed to be added to the Policies Map to reflect Policy MG03: Settlement Hierarchy as set out in MM5 of the Schedule of Potential Main Modifications.





# Composite Policies Map

